

# LOWER BRULE ENVIRONMENTAL PROTECTION PROGRAM

---



Lower Brule Environmental Program

187 Oyate Circle

Lower Brule, SD 57548

605-473-0153

Website: [lbt-epo.org](http://lbt-epo.org)

---

*Unci Maka Hokici*

*"Voices for Mother Earth"*

*Okiciya pe/pi/po( Help One another)*

---

# LOWER BRULE ENVIRONMENTAL PROTECTION PROGRAM

---

---

---

## EPO Office

**EPO Director – George Honeywell**

**Water Quality Coordinator - DJ Middletent**

**319 Coordinator – Sheldon Fletcher**

**Brownfields TRP Coordinator - Mary Jane Gourneau**

**Solid Waste Program – Director Tim Estes**

**Solid Waster Workers –  
Aaron Box-Anthony Kennedy**



# LOWER BRULE ENVIRONMENTAL PROTECTION PROGRAM

---

**July 2017**

**The mission of EPA is to protect human health and to safeguard the natural environment --air, water and land--upon which life depends.**

**Since 1970, EPA has been working for a cleaner, healthier environment for the American people.**

## Brownfields Program description

EPA's Brownfield's Program is designed to empower states, communities, and other stakeholders in economic redevelopment to work together in a timely manner to prevent, assess, safely clean up, and sustainably reuse Brownfields

## Brownfields Program Tribal Vision

Contaminated or potentially contaminated sites located in Indian Country are restored to the highest and best use, based upon tribal priorities and available resources. The focus on brownfields revitalization helps instill the concept of environmental protection and reuse and leads to increased benefits in Indian Country.

### Administer and implement the TRP Four Elements.

- 1.) Timely Survey & Inventory of Brownfield Sites.
- 2.) Oversight & Enforcement Authorities or Other mechanisms & Resources.
- 3.) Mechanism & Resources to Provide Meaningful Opportunities for Public Participation.
- 4.) Mechanisms for Approval of a Cleanup Plan & Verification & Certification that Clean-up are Complete and establishment of a Public Record.
  - Develop and approve RFP's.
  - Manage/oversee contracts.
  - Prepare Property Profile Forms.
  - Obtain Training as needed and available.
  - Inspect sites within the exterior boundaries of the Lower Brule Sioux Reservation.
  - Resolve issues, concerns and complaints.
  - Assists and provide technical assistance when necessary to EPA, Tribal Law Enforcement, Tribal Programs and the Tribal Council.
  - Write quarterly, mid and end year reports due to EPA.
  - Maintain Public Record for the Tribal Response Program.

## LOWER BRULE ENVIRONMENTAL PROTECTION PROGRAM

---

It is Spring time. The grass is green and the flowers are blooming!



We have been working on the cleanup of the Former Housing Authority Building as you can see the old garages are gone. The building is down and they have seeded the area. It looks good.

Earth Day is April 22, 2017 and the clean week activities started the week of April 17<sup>th</sup>. Thank you everyone for getting out and helping clean up our community.

For the next Fiscal year I will be out surveying the Lower Brule Reservation for any new sites. If you know of any please come see me or give me a call.

I check all my sites on my Public Record to make sure no new dumping is occurring.

Please remember to Thank the Solid Waste crew. They do a good job of picking up the large items that cannot go in the dumpsters.

Please stop in our office any time if you have any questions or concerns about our program. We are here to help!

Thank You

Mary Jane Gourneau Brownfields Coordinator

# LOWER BRULE ENVIRONMENTAL PROTECTION PROGRAM

---



Old BIA Building  
(Before & After)

Old BIA Jail  
(Before & After)



Rodeo Dump Site

Old Transfer Station Site

# LOWER BRULE ENVIRONMENTAL PROTECTION PROGRAM

---



Rubble Site



Old Diabetic Building Site

## LBST TRP Brownfields Inventory List

1. 2004-10 BIA Administration Building
2. 2012-02 Old Housing Office
3. 2011-01 Old BIA Jail
4. Old Diabetic Building(Boxing Club) 1-26-13 Burned Down
5. 2012-01 Old Transfer Station
6. 2004-04 Old West Brule Dump
7. Lagoon Rubble Site/ across from Red Store
8. Sioux Boys-(Gas Tanks)
9. 2004-03 Kids Pond
10. 2000-01 Rodeo Dump
11. Old Shooting Range
12. Old Boys & Girls Club

### Rural Area

13. 2004-02 Durkin Dump
14. Durkin Curve House
15. Thompson Site/Fort Hale Bottom



# ATTENTION

The following is a list of what may be deposited at the  
Material Recovery Facility (MRF)

WOOD: Trees, Tree Limbs, Yard Waste, etc.

METALS: Iron, Steel, Rims, Bikes, Bed Frames, etc.

WHITE GOODS: etc. STOVES - REFRIGERATORS-  
WATER HEATERS- FURNACES

OR leave all the big stuff by the curb of your home  
and the Solid Waste workers will pick it up! Please  
don't leave it by the dumpsters or in the dumpsters.

Please throw your garbage in the dumpsters evenly.

THANK YOU FOR YOU COOPERATION!!!!!!

The Solid Waste Crew.

The Solid Waste Crew works really hard to keep the Reservation clean! Please do your part!



# LOWER BRULE ENVIRONMENTAL PROTECTION PROGRAM

---





# LOWER BRULE ENVIRONMENTAL PROTECTION PROGRAM

---

The Brownfields Grant/Workplan consists of 8 tasks.

Task 1 Timely survey and inventory if Brownfields sites on tribal land.

- 1.1 Tribal Land Survey
- 1.2 Maintain Brownfields Inventory
- 1.3 Prioritize Sites

Task 2 Oversight and enforcement authorities or other mechanisms and resources.

- 2. Oversight of all sites in the Public Record

Task 3 Mechanisms and resources to provide meaningful opportunities for public participation

- 3.1 Public Meetings
- 3.2 Dissemination of Information
- 3.3 LBST-EPO Website

Task 4 Mechanism for approval of a cleanup plan and verification and certification that cleanup is complete

- 4.1 Mechanism for approval

Task 5 Public Record

- 5.1 Update Public Record
- 5.2 Public Record Accessible

Task 6. Program Enhancement

- 6.1 Trainings
- 6.2 Meetings
- 6.3 Professional Meetings

Task 7 Site-specific Assessment and Cleanup Activities

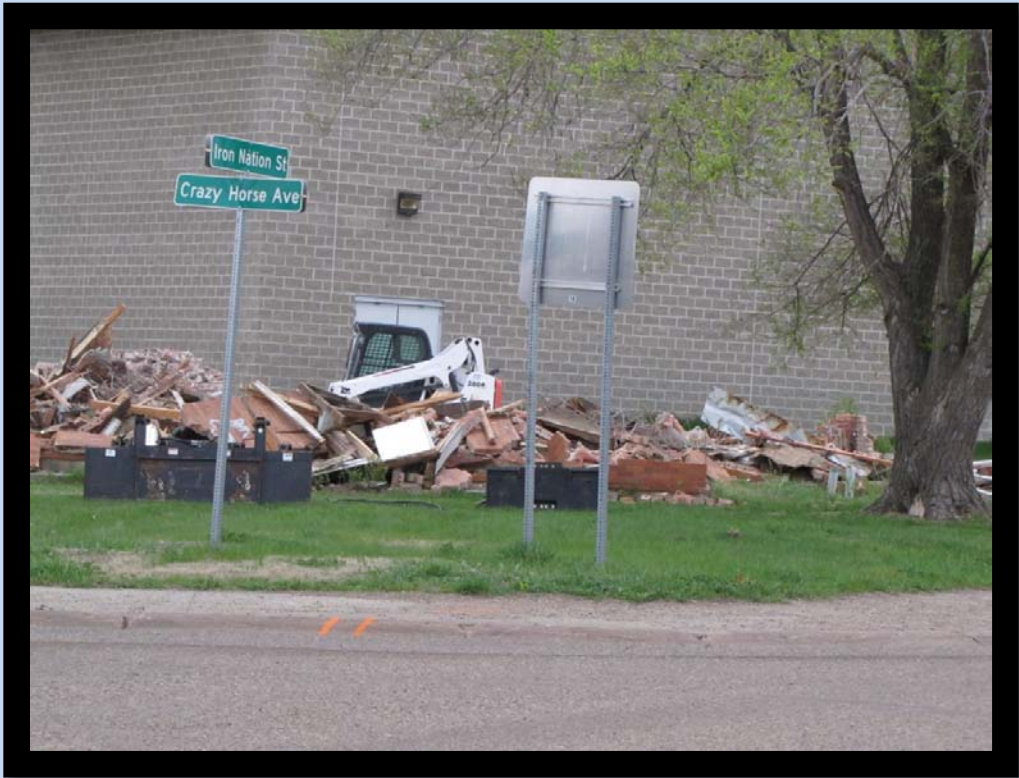
- 7.1 Phase II Assessment Work
- 7.2 Conduct Assessments
- 7.3 Cleanup of Sites

Three quarterly reports and one Final report are due during the Fiscal Year.

- 1. 1<sup>st</sup> Quarterly Report covers (October-November-December) Due January 31
- 2. 2<sup>nd</sup> Quarterly Report covers (January-February-March) Due April 29
- 3. 3<sup>rd</sup> Quarterly Report covers (April-May-June) Due July 29
- 4. 4<sup>th</sup> Quarterly/Final Report covers (July-August-September) Due October 31

# LOWER BRULE ENVIRONMENTAL PROTECTION PROGRAM

Former Housing Authority Building Site



LOWER BRULE ENVIRONMENTAL PROTECTION PROGRAM





LOWER BRULE ENVIRONMENTAL PROTECTION PROGRAM

The Unity Day April 28, 2017



LOWER BRULE ENVIRONMENTAL PROTECTION PROGRAM





LOWER BRULE ENVIRONMENTAL PROTECTION PROGRAM





## CLEAN-UP Week !

Thank you everyone who came out and helped clean up our  
community!

Thank you for all your support for our Lower Brule Environmental  
Office.

[www.lbst-epo.org](http://www.lbst-epo.org)

605-473-0163